

PHCRED e-News Spotlight on Primary Health Care Research

Welcome

▶ 2 March 2010

Welcome to PHCRED e-News. This is a fortnightly e-Newsletter to keep you informed about useful research resources and information, such as 'how to...' guides and advertised funding opportunities for your own research.

Our aim is to support you to be research interested and active. Please feel free to contact us if you have any other ideas or questions.

If you wish to be removed from this mailing list please let us know by emailing us at phcred@greaterhealth.org

We look forward to helping you with your research.

Dr Michael Coates & Liz Jackway

What's happening?

2010 PHC Research Conference

The 2010 PHC Research Conference (formerly GP & PHC Research Conference) will be held at the Darwin Convention Centre from 30 June-2 July 2010 with the theme *Primary health care research and health reform: Improving care*. [Call for abstracts](#) for papers, posters, workshops and symposia now open - closing 19 March 2010. [On-line registration](#) NOW open - earlybird closes 14 May 2010.

About PHCRED

The objectives of the PHC RED Program are to:

- Support development of research career pathways for early-mid career researchers using specific strategies including mentoring
- Improve the research skills of early-mid career researchers through the provision of research training and support
- Provide opportunities for early-mid career researchers to gain experience through participation in the research projects of senior researchers.

How to contact PHCRED

Primary Health Care Research Evaluation and Development (PHCRED) Program
Greater Health
Greater Green Triangle University Department of Rural Health
Flinders and Deakin Universities
PO Box 423
Warrnambool VIC 3280

email: phcred@greaterhealth.org
Phone Warrnambool: 03 5563 3526 or 03 5563 3315
Fax: 03 5563 3144



All previous newsletters can be found on our website at:

<http://www.greaterhealth.org/phcred/eNews2009/>

Heart Foundation - Fellowships: Call for applications

The Heart Foundation is calling for applications for fellowships to commence in 2011.

Postdoctoral Fellowships (Biomedical, Clinical, Public Health)

These fellowships are available to medical and science graduates who have completed an MD or PhD award within the last five years and who are seeking support to become independent researchers. Post-doctoral Fellowships are tenable for up to two years. They may be full or part-time. For more Information go to

http://www.heartfoundation.org.au/Professional_Information/Research/Available_Funding/Postdoctoral_Fellowships/Pages/default.aspx

Overseas Research Fellowship

Overseas Research Fellowships are available to medical and science graduates who have completed a PhD or MD award within the last 24 months. For more information go to

[http://www.heartfoundation.org.au/Professional_Information/Research/Available_Funding/Postdoctoral_Fellowships_\(Overseas\)/Pages/default.aspx](http://www.heartfoundation.org.au/Professional_Information/Research/Available_Funding/Postdoctoral_Fellowships_(Overseas)/Pages/default.aspx)

Career Development Fellowship

The purpose of the Career Development Fellowship is to develop the career of Australian citizens or permanent residents, who are 2-12 years postdoctoral (2-7 and 7-12 years). These awards are the most prestigious offered by the program. Career Development Fellowships are tenable for four years. They may be full or part time. For more information go to

http://www.heartfoundation.org.au/Professional_Information/Research/Available_Funding/Career_Development_Fellowships/Pages/default.aspx

Applications for all fellowships close Monday 12th April 2010 (Office of Research closing date is Monday 5th April 2010). Applications must be submitted through the Office of Research.

Future Fellowships for funding commencing in 2010 – Frequently Asked Questions available

The Frequently Asked Questions for Future Fellowships for funding commencing in 2010 are now available on the ARC website at http://www.arc.gov.au/ncgp/futurefel/ft_instructions.htm.

The ARC online application system (RMS) will open for Future Fellowships Proposals shortly after the closing date of the Discovery Projects application round for 2011 (3 March 2010). The closing date for submission of Future Fellowships Proposals is 17:00 (AEST), Wednesday 21 April 2010.

Please be reminded that Pre-Submission Eligibility Exemption Requests are also open for submission. The closing date for Pre-Submission Eligibility Exemption Requests is 17.00 (AEDT), Friday 19 February 2010.

Further information regarding the Future Fellowships Pre-Submission Eligibility Exemption Request process is available at http://www.arc.gov.au/ncgp/futurefel/ft_eligibility.htm.

The ARC will provide further notification when the scheme opens and the online Proposal Form and other relevant documentation become available.

Further information regarding the Future Fellowships scheme is available at http://www.arc.gov.au/ncgp/futurefel/future_default.htm.

ARC Linkage (Round 2) for 2010 funding: Rejoinders now open

Rejoinders for Linkage Projects (LP) are now open in the ARC online application system (RMS) and close at 17:00 (AEST) on Friday 26 February 2010.

Instructions on how to view assessments and submit rejoinders for this scheme are available on the ARC web site at: http://www.arc.gov.au/applicants/assessor_rejoinders.htm.

If you have any questions please contact Anna Fitzgerald on 02 6287 6600 or email arc-linkageprojects@arc.gov.au

NHMRC Tracker: 19 February 2010

For the latest edition of the NHMRC Tracker, featuring current news and activities, please visit NHMRC Tracker

<http://nhmrcommunicationscreatesend2.com/T/ViewEmail/r/3F40DD704154DF81/6955D9F5DB765F132540EF23F30FEDED> . Contents include:

- Peer review of applications into Indigenous health;
- TRIP Fellowships - new application closing date;
- Management of volatile substance use;
- Podcast: NHMRC newscast February 2010.

Morgan Stanley Pediatrics Fellowship

The Fellowship supports Australian or American researchers who wish to conduct leading research in pediatrics at a top US or Australian educational/research institution. The Fellowship is open for post graduate or post doctoral research in the area of medicine particularly with a focus on early childhood and offers for up to US \$25,000 a year.

The Fellowship will open in the 2010 Australia to US program and be offered the following year in the US to Australia program.

Applications close 15th April 2010. Office of Research closing date 8th April 2010.

Guidelines and application form are available at the American Australian Association website

<http://www.americanaustralian.org/morganstanleyfellowship/>

INTERNATIONAL FULBRIGHT SCIENCE & TECHNOLOGY PhD SCHOLARSHIP

This is a new opportunity for an Australian graduate to apply for an International Science and Technology Scholarship to study for a PhD at a US university for up to three years, fully funded at up to AUD \$300,000. The scholarship covers full tuition: return airfare, monthly stipend, allowances for books, health and accident insurance, support and enrichment seminars. Applications close 1 May 2010.

For more information, please visit the Australian-American Fulbright Commission website.

<http://www.fulbright.com.au/scholarships/InternationalFulbrightScienceandTechnologyAwards.html>

OXFORD NUFFIELD MEDICAL FELLOWSHIP 2010/11

Applications are invited for an award in a Clinical Medicine or Medical Science department of the University. Applicants should have graduated from one of the Australian universities listed below and should hold a medical qualification from Australia or the UK or have appropriate research experience. There is no age or status limit.

The fellowship has an allowance of £40,745. The fellowship is for 2 years, with the possibility of an extension for a 3rd year. Fellows are expected to return to Australia at fellowship end to continue work of a similar nature. The award is available from 1 October 2010 or such other later date as may be agreed.

Further information is available from the Australian Academy of Science website.

<http://www.science.org.au/awards/awards/nuffield.html>

Closing date for applications is 27 May 2010. Office of Research closing date is 20 May 2010.

Participating Universities: University of Adelaide, Flinders University, University of Melbourne, Monash University, Australian National University, University of New South Wales, University of Newcastle, University of Queensland, University of Sydney, University of Tasmania, University of Western Australia.

NHMRC Partnerships for Better Health: Applications open

The NHMRC Partnerships initiative was designed by the NHMRC to more effectively integrate evidence into health policy and service delivery, a key objective of its Strategic Plan 2007-2009. NHMRC's aim is to improve health care through stronger evidence-based approaches.

The second call for funding under the NHMRC Partnerships Projects initiative (Partnerships Projects 2009) was announced in the 2009-2010 Funding Calendar.

Applications for this call will be submitted online through the NHMRC's Research Grants Management System (RGMS).

Applications are now open in the RGMS (<http://www.nhmrc.gov.au/grants/rgms/index.htm>) and the related documentation is available on the RGMS under Documentation in the left hand navigation bar and by further selecting Knowledge Store, Public, Application Documentation, Partnerships. Please note that these documents are dated 2009 but the closing date indicates that they are current.

Date of submission to NHMRC is 30 April 2010, date of submission to the Office of Research for review is 16 April 2010.

For further information please visit the NHMRC Partnerships Projects webpage and also visit the RGMS webpage for login instructions, CV and Profile building, application related documentation, and access to an online application.

For further general grant submission through the Office of Research information, please visit the Grant Application Submission webpage.

Please contact Julie Petticrew in the Office of Research by phone on 8201 5371 or by email for further information.

Sylvia & Charles Viertel Charitable Foundation

The Trustees of the Sylvia & Charles Viertel Charitable Foundation invite applications to the 2011 medical program. There are 2 categories:

Senior Medical Research Fellowships

This is a 5 year fellowship valued at \$195,000 per annum to commence in 2011.

Researchers who are medically qualified or graduates of another scientific discipline with recognised post-doctoral achievements seeking to establish a research career in Australia and undertake research in an Australian academic institution are eligible to apply whether they are currently working in Australia or not. Only Australian nationals or permanent residents are eligible for the awards.

Clinical Investigatorships

This award is valued at \$60,000 and is given on a once only basis.

Applicants must be graduates of medicine or other clinical disciplines who have completed both their clinical and research training preferably at doctoral level. Applicants will be commencing their first definitive clinical position or have been in such a post for no more than 24 months on 1 May 2010.

Applications close on 1 May 2010. Office of Research closing date is 23 April 2010.

Further information and application forms available from the ANZ website

<http://www.anz.com/personal/private-bank-trustees/trustees/apply-grant/named-charitable-trusts/>

NHMRC Australia Fellowship for Health and Medical Research: Invitation to apply

The NHMRC has extended an invitation to apply for the Australia Fellowship for Health and Medical Research - funding to commence in 2011.

- Expressions of Interest for the fifth round of Australia Fellowships opened on 10 February 2010;
- Expressions of Interest for Applicants based in Australia close 5:00pm AEDT 25 March 2010 (Internal Office of Research closing date 18 March 2010);
- Expressions of Interest for International applicants close 5:00pm AEDT 30 July 2010 (Internal Office of Research closing date 23 July 2010).

The aims of the scheme are to:

- support the most outstanding and creative health and/or medical researchers across the range of disciplines in biomedical, clinical, health services and public health research;
- foster the expansion of the scale and scope of Australian health and medical research including innovative research that is transformative and with high impact potential;
- build excellent research teams in Australia, foster mentoring and collaboration and provide opportunities for talented researchers;
- undertake research that is of major importance, potentially high impact and of significant benefit to Australians.

In this fifth funding round, NHMRC particularly encourages applications from health and medical researchers, whose record of research achievements and vision for the Fellowship, contribute to the translation of discoveries into improvements in clinical care, health services and public health.

Applicants who do not currently hold Australian permanent residency or are not a New Zealand citizen who hold a Special Category Visa will be required to obtain temporary resident status prior to commencement of an Australia Fellowship.

Further information and documentation is available from the NHMRC Website.

<http://www.nhmrc.gov.au/grants/apply/career/index.htm>

General information regarding submission of grant applications through the Office of Research is available from the Office of Research website. Please contact Julie Petticrew in the Office of Research on 8201 5371 if you require further information.

CPD for Allied Health Professionals

The Greater Green Triangle University Department of Rural Health's Statewide Allied Health Workforce Education program (SAHWEP) aims to support the educational needs of allied health professionals in Victoria. Allied health practitioners from South Australia, Northern Territory and Queensland Health are also able to access the program.

The [SAHWEP 'CPD for Allied Health Professionals' website](#) offers allied health professionals free access to a large range of information and resources including details of upcoming presentations as well as access to recording of previous presentations. The program also aims to develop and implement a range of resources and tools for health professionals that assist with professional development and networking opportunities.

Over the longer term it is expected that the initiative will improve recruitment and retention of allied health professionals by offering better support structures and networks, and facilitating improved career development.

CPD for Allied Health - upcoming Presentations

Date: 3 March 2010

Presentation: Insomnia

Presenters: Assoc/Prof Gerard Kennedy and Dr Rob Campagnaro

Venue: Monash Clinical School, Auditorium, Merly Street, Bendigo

Time: 1.00pm to 4.30pm

Book online at www.cpdforalliedhealth.org or phone Katie Dopheide 03 55 518448 or [email](#)

Cost free, coffee/tea provided

Date: 15 March 2010

Presentations:

Learning Styles and Adult Learning Theory, Emotional Intelligence and Choice Theory

Presenter: Raj Samrai – Research Fellow with SAHWEP, Education & Training

Venue: Bendigo (to be advised)

Time: 1.00pm to 4.15pm

Book online at www.cpdforalliedhealth.org or phone Katie Dopheide 03 55 518448 or [email](#)

Cost free, coffee/tea provided

Date: 18 March 2010

Presentation: Program adherence issues in older people

Presenter: Raj Samrai – Research Fellow with SAHWEP, Education & Training

Venue: Kyabram (to be advised)

Time: 10.00am to 11.30am

Book online at www.cpdforalliedhealth.org or phone Katie Dopheide 03 55 518448 or [email](#)

Cost free, coffee/tea provided

Date: 18 March 2010

Presentation: How to run a focus group as part of qualitative research

Presenter: Raj Samrai – Research Fellow with SAHWEP, Education & Training

Venue: Echuca (to be advised)

Time: 2.00pm to 3.30pm

Book online at www.cpdforalliedhealth.org or phone Katie Dopheide 03 55 518448 or [email](#)

Cost free, coffee/tea provided

Date: 19 March 2010

Presentation: Loddon Mallee Allied Health Conference 'Emerging Realities of Allied Health Practice'

Presenters: Numerous presenters representing various organisations

Venue: Quality Inn Port of Echuca, 465 High Street, Echuca

Time: 9.00pm to 3.40pm

Book online at www.cpdforalliedhealth.org or phone Kay Ford Coordinator 03 0419 836838 or email kford@bendigohealth.org.au

A registration fee applies for this function when attending in person

Lunch and coffee/tea provided with registration

All previous newsletters can be found on our website at:

<http://www.greaterhealth.org/phcred/eNews2009/>

CPD for Allied Health Professionals

Date: 21 April 2010

Presentations:

Population Health in Victoria: Health Inequalities

Indigenous Health and Cultural Safety in Clinical Practice

Stress in Allied Health – How to Cope and Become More Efficient

Personality Styles and Listening Skills

Presenter: Raj Samrai – Research Fellow with SAHWEP, Education & Training

Venue: The Rivers Room, Bairnsdale RSL, 2 Forge Creek Road, Bairnsdale

Time: 9.00am to 3.30pm

Book online at www.cpdforalliedhealth.org or phone Katie Dopheide 03 55 518448 or [email](mailto:)

Cost free, morning tea and lunch provided

Date: 22 April 2010

Presentations: Population Health in Victoria: Health Inequalities, Indigenous Health and Cultural Safety in Clinical Practice, Stress in Allied Health – How to Cope and Become More Efficient, Personality Styles and Listening Skills

Presenter: Raj Samrai – Research Fellow with SAHWEP, Education & Training

Venue: Auditorium, Gippsland Regional Clinical School, Latrobe Regional Hospital, Princes Highway, Traralgon West

Time: 9.00am to 3.30pm

Book online at www.cpdforalliedhealth.org or phone Katie Dopheide 03 55 518448 or [email](mailto:)

Cost free, morning tea and lunch provided

Date: 13 & 20 May 2010

Presentation: Self Management, Team and Leadership Course (2 day)

Presenter: Raj Samrai – Research Fellow with SAHWEP, Education & Training

Venue: Moyne Health Services, Adult Day & Support Services Centre, Villiers St, Port Fairy

Time: 9.00am to 4.00pm

Book online at www.cpdforalliedhealth.org or phone Katie Dopheide 03 55 518448 or [email](mailto:)

Cost free, coffee/tea provided

Date: 17 & 18 May 2010

Presentation: Self Management, Team and Leadership Course (2 day)

Presenter: Raj Samrai – Research Fellow with SAHWEP, Education & Training

Venue: Robinvale District Health Services, Latje Road, Robinvale

Time: 9.30am to 4.30pm

Book online at www.cpdforalliedhealth.org or phone Katie Dopheide 03 55 518448 or [email](mailto:)

Cost free, coffee/tea provided

Date: 29 July 2010

Presentations: Teamwork and Meetings, Leadership

Presenter: Raj Samrai – Research Fellow with SAHWEP, Education & Training

Venue: Education Centre, Stawell Hospital, Sloane St, Stawell

Time: 10.30am to 3.30pm

Book online at www.cpdforalliedhealth.org or phone Katie Dopheide 03 55 518448 or [email](mailto:)

Cost free, coffee/tea provided

Date: 25 August 2010

Presentations:

Population Health in Victoria: health inequalities

Indigenous Health and Cultural Safety in Clinical Practice

Presenter: Raj Samrai – Research Fellow with SAHWEP, Education & Training

Venue: Education Centre, Stawell Hospital, Sloane St, Stawell

Time: 11.00am to 3.00pm

Book online at www.cpdforalliedhealth.org or phone Katie Dopheide 03 55 518448 or [email](mailto:)

Cost free, coffee/tea provided

All previous newsletters can be found on our website at:

<http://www.greaterhealth.org/phcred/eNews2009/>

Heart Foundation

Call for applications - Grants-in-Aid

The Heart Foundation awards Grants-in-Aid to support biomedical, clinical or public health research (including health services research) relevant to heart, stroke and blood vessel disease.

Applications for project support are now available. Heart Foundation Grants-In-Aid are ideal to support early career researchers seeking to establish their independent track record and to fund pilot or proof of principle studies. Applications are now open and further information can be found here <http://email.ibox.com.au/t/r/l/udlddi/hiuythc/d>. Closing Date: 17 March 2010

Call for applications - Fellowships

We are now calling for applications for fellowships to commence in 2011.

Postdoctoral Fellowships (Biomedical, Clinical, Public Health)

These fellowships are available to medical and science graduates who have completed an MD or PhD award within the last five years and who are seeking support to become independent researchers. Post-doctoral Fellowships are tenable for up to two years. They may be full or part-time. Go to <http://email.ibox.com.au/t/r/l/udlddi/hiuythc/h> for more information.

Overseas Research Fellowships

Overseas Research Fellowships are available to medical and science graduates who have completed a PhD or MD award within the last 24 months. Go to <http://email.ibox.com.au/t/r/l/udlddi/hiuythc/k> for more information.

Career Development Fellowship

The purpose of the Career Development Fellowship is to develop the career of Australian citizens or permanent residents, who are 2-12 years postdoctoral (2-7 and 7-12 years). These awards are the most prestigious offered by the program. Career Development Fellowships are tenable for four years. They may be full or part time. Go to <http://email.ibox.com.au/t/r/l/udlddi/hiuythc/u> for more information. Applications for all fellowships close on Monday 12th April 2010

NOMINATE A SCIENCE CHAMPION FOR PM'S PRIZES FOR SCIENCE

Joint Media Release with Prime Minister Kevin Rudd

Australians, while in the Olympic spirit, are encouraged to nominate their science champions for the 2010 Prime Minister's Prizes for Science.

The Prime Minister's Prizes for Science are the most significant science prizes in Australia and a fitting tribute to the brilliant work done by our scientists and science teachers.

Australia's science champions, be they scientists like Professor Blackburn or the science teachers who inspire them, work tirelessly to enrich our lives.

Their work makes a huge contribution to our economic, environmental and social well-being.

These prizes give Australia the chance to honour these champions.

The prizes are awarded in five categories:

1. Prime Minister's Prize for Science (\$300,000);
2. Malcolm McIntosh Prize for Physical Scientist of the Year (\$50,000);
3. Science Minister's Prize for Life Scientist of the Year (\$50,000);
4. Prime Minister's Prize for Excellence in Science Teaching in Secondary Schools (\$50,000); and
5. Prime Minister's Prize for Excellence in Science Teaching in Primary Schools (\$50,000).

In 2009, Dr John O'Sullivan received the Prime Minister's Prize for Science for his achievements in astronomy and wireless technologies.

Nominations close on 21 May 2010. To nominate online, or for further information, visit

<https://grants.innovation.gov.au/SciencePrize/Pages/Home.aspx>

ARC have released the **ranked journal and conference lists** with associated FoR codes. These lists are available, together with the changes and updates that have been made, at the Deakin ERA resources webpage <<http://www.deakin.edu.au/research/era/resources.php>>

RSD is currently setting up an ERA portal where individuals will be able to view their ERA eligible publications which will have the appropriate FoR codes, and associated journal and conference rankings included as per the ARC ERA lists. We will notify you as soon as access to the ERA Portal is available.

The deadline for receipt of ERA eligible publications by DRO library staff is 28th March 2010

Additional functionality for the ERA portal will be rolled out from late February and throughout March, namely the ability to adjust FoR codes and enter Esteem and Applied measures where required for the ERA submission.

In early March the functionality for Cluster leaders and coordinators of disciplines will be released, so that summary information is available based on FoR codes and number of ERA eligible publications (including number of ranked journals in each of the categories). NB updates to timelines and ERA processes can be found on our Webpage at <http://www.deakin.edu.au/research/era/>

Evaluation of Projects

TS #362933

Closing Date: 10-Mar-2010 11:00 AM

Web Document Location: <https://www.tenders.vic.gov.au>

Contact: Natalie Sandic, <mailto:natalie.sandic@health.vic.gov.au>, Ph: 03 9096 2122

Contract No. Health RFQ 457

The Salvation Army are funded by the Department of Health (DH) to operate and deliver a number of alcohol and other drug treatment (AOD) services across Victoria. These services include:

- AOD rehabilitation (residential and community)
- Counselling and support
- AOD withdrawal (including residential)

Review Guidelines & Develop Health Promotion Materials

TS #362932

Closing Date: 11-Mar-2010 12:00 AM

Web Document Location: <http://www.tenders.vic.gov.au>

Contact: Merryle French, French.Merryle.P@Edumail.vic.gov.au,

Contract No. 0910-64

No: 0910-64 Review Guidelines and develop health promotion materials for school nurses.

This document is a tender brief and has been prepared to provide information to assist prospective tenderers in the preparation and submission of proposals for the development and delivery of program guidelines, clinical documents, and key health promotion curriculum documents for the School Nursing Programs.

Deakin University
Faculty of Health, Medicine, Nursing and Behavioural Sciences
**2010 Faculty Research Development Grants
Guide to Applicants**

This Faculty scheme aims to encourage new researchers and new academic staff to develop their research careers. \$90,000 has been budgeted to fund approximately 6 grants for 2010.

The scheme is designed to support non-SRC researchers, hence members of SRCs should seek alternate funding for their research through their SRC Director.

This scheme will be competitive and give priority to funding proposals that are likely to lead to the development of a research program with the capacity to lead to high quality peer-reviewed journal publications and to generate external research income from National Competitive Grants.

There will be one call for 2010 only. Applications will close on **Tuesday 9 March, 2010** and successful applicants will be notified by 31 March, 2010.

An applicant may appear as chief investigator on one application only.

Funding of successful applications will not exceed \$20,000.

The research design must ensure that all of the grant money is spent by 13 December 2010. University policy allows NO carry-over of these funds into the next year.

Eligibility

Chief Investigator 1 must hold doctoral qualifications (or be submitted for examination) and at least 0.5EFT appointment continuing to 2011; and must be academic or research staff in their first five years post conferral of their PhD, or Level A to Level C appointments in their first eighteen months at Deakin University. Chief Investigator 1 must also not be a member of an SRC.

Each Chief Investigator 1, must nominate a senior and active Deakin University researcher who is prepared to mentor the applicant, and will be a member of the research team. (Please note, Level D and E staff are not eligible to apply as Chief Investigators).

Priorities

Proposals that involve teams or multidisciplinary research programs

Proposals leading to Category 1 Grants applications or fellowship applications.

Demonstrated of an effective mentoring relationship.

Exclusions

Research funds will not be provided for the salary of the CIs, mentors, literature searches, capital equipment or infrastructure, and support for PhD or student projects. Examples of items excluded include computers, computing programs, recording equipment, and other items generally available through the Schools.

Past recipients of Faculty research grants who have not published the findings in quality peer-review journals and have not submitted external grant applications based on their findings.

Review Administration

The Faculty Grants Sub-committee will form the basis for reviewing these applications. Feedback will be available to all Chief Investigators with respect to their application.

NB. Application forms are available from the "staff only section" under "forms and templates" of the Faculty website. **One signed electronic copy should be forwarded** to Steven Sawyer steven.sawyer@deakin.edu.au, Dean's Office, Faculty of Health, Medicine, Nursing & Behavioural Sciences, Burwood Campus, **by 12 midday on the due date.**

S D Sawyer 19/2/2010

The Victorian Cancer Agency Fellowships, scholarships and Grants

The Victorian Cancer Agency, a State Government initiative that links cancer research with patient care, would like to inform you of research funding opportunities for 2010 and 2011.

Funding will be offered in the following areas:

- * Clinical Research Fellowships - 3 categories:
 - o Clinical Research Fellowship (2)
 - o Palliative and Supportive Care Fellowship (1)
 - o Public Health Fellowship (1)
- * Palliative and Supportive Care Scholarships (3)
- * Early Career Seed Grants (4)
- * Consumer Grants (3)
- * Palliative and Supportive Care Capacity Building (4)

The Agency plans to call for applications for its 2010 funding round in March - exact date to be advised. Application Guidelines for each of the above funding streams are now available on the Agency's website.

The Guidelines can be viewed at: <http://www.victoriancanceragency.org.au>

If you have any queries, please call the Victorian Cancer Agency on (03) 9635 5481, or email victoriancanceragency@health.vic.gov.au

Funding for Collaborative Research Projects

TS #363226

Web Document Location: <http://www.science.org.au/internat>

The Australian Academy of Science is pleased to invite applications for two new bilateral funding initiatives to support researcher mobility and collaborative research projects between Australia and Germany in key priority fields of research.

Applications open on Monday 22 February 2010. Applications forms and selection criteria can be found on the academy's website.

NHMRC Peer Review of applications into Indigenous health

For applications involving Indigenous health research for Project Grants, Postgraduate Scholarships, Training awards and Career Development Awards, NHMRC will establish specific Indigenous health Peer Review Panels for 2010. Panel members will have both research expertise and will assess applications against the Criteria for Health and Medical Research of Indigenous Australians.

For Indigenous health applications for other schemes, specific external written assessment against the Criteria for Health and Medical Research of Indigenous Australians will be sought.

Further information can be found on the NHMRC website <<http://nhmrcommunications.createsend2.com/t/r/l/udlydy/jdktdhdu/r>>

SOUTHGATE INSTITUTE FOR HEALTH, SOCIETY AND EQUITY

A national centre for research into the social determinants of health & wellbeing



Gender, Power & Revitalising Feminism

Feminism Now in academia, services and activism

A forum by the Southgate Families@Flinders research network for

International Women's Day 2010

Tuesday March 9th 2.45pm – 6.00pm, Hetzel Lecture Theatre, State Library of SA

Chair: Professor Fran Baum

**ARC Federation Fellow, Director Southgate Institute for Health, Society and Equity and
South Australian Community Health Research Unit (SACHRU)**

Feminism has pushed the boundaries of critical thinking and equitable practice and action in many aspects of our lives and culture. Key to the influence of feminism has been its specialisation over several decades in academia, women's organisations and activism. While each has developed its own capacity, these forms of feminism have progressively lost their connections to each other and to broader social movements, making them vulnerable to many forms of attack from entrenched dominant interests. This forum will explore potential spaces for revitalising feminism through reconnecting thinking, practice and activism.

The forum will be of interest to women and men in communities, services and education institutions who are concerned about gender, power and social justice. This event follows the Families@Flinders forum in August 2009 entitled *Gender & Power as Social Determinants of Health & Wellbeing* in which academics and women's services managers and practitioners explored the ways that service systems reflect and reproduce gender and power inequities.

Keynote Speakers

Dr Zora Simic – Contemporary feminism: moving beyond the branding 'problem'

Associate Professor Barbara Baird - Thinking critically about gender: The legacy of the Howard era.

Short presentations from leaders in women's services and activism in South Australia

RSVP to Southgate.admin@flinders.edu.au by the 5th of March 2010.

An entrance fee of \$5 will be collected at the door.

Supported by:



All previous newsletters can be found on our website at:

<http://www.greaterhealth.org/phcred/eNews2009/>

Celebrating International Women's Day

Each year **UNIFEM Australia** coordinates more than 50 major events on or around **International Women's Day**, attracting over 12,000 people in all capital cities and in regional Australia.

In 2009, the largest event was held in Adelaide with over 1900 women attending. The Adelaide Breakfast raised \$40,000 which helped support UNIFEM's Pacific Markets Project which aims to improve conditions in Melanesian rural marketplaces.

Brochures and booking registration forms for the 2010 Breakfast will be distributed in late January 2010.

For further information

Phone: 8223 3388

Fax: 8223 5588

Email Enquiries: adelunifem@unifem.org.au

ADVANCE NOTICE

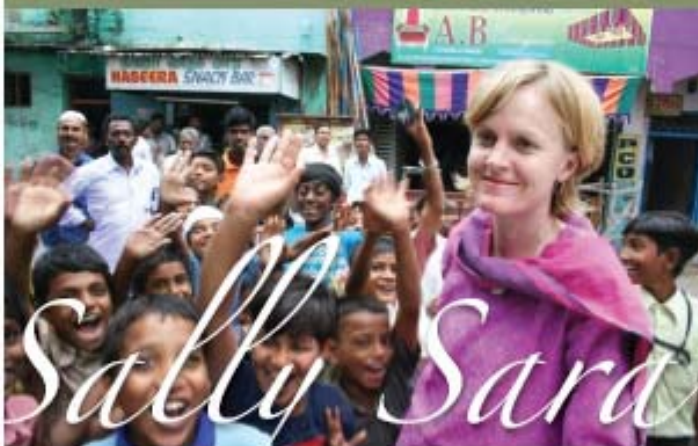
Adelaide UNIFEM Breakfast 2010

Hosted by

Senator The Hon Penny Wong

FRIDAY 5 MARCH 2010

Adelaide Convention Centre
North Terrace, Adelaide
(Doors open 6.15 am for
7.00 am prompt start)



Sally Sara

Guest Speaker

Sally Sara is an award winning foreign correspondent with the ABC. She has reported from more than 30 countries including Afghanistan, Iraq, Zimbabwe, South Africa and Sierra Leone.

At the age of 29, Sally was the first woman to be appointed as the ABC's Africa Correspondent. She spent five years travelling and reporting across the continent. Her first book, *GOGO MAMA* told the stories of 12 African women. It debuted on the national best seller list and was nominated for best non-fiction book in the Walkley Awards.

In 2007, Sally was awarded the International Women's Media Foundation's Fellowship for human rights journalists. She spent nine months in the United States, undertaking studies and reporting for the *Boston Globe* and *The New York Times*.

In 2008, Sally broke the glass ceiling again and was the first woman appointed as the ABC's South Asia correspondent. She is currently based in the Indian capital, New Delhi.

Sally has won a UN Media Peace Prize, has been named South Australian Young Journalist of the Year, Queensland Journalist of the Year and is a four time finalist in the Walkley Awards.

When she's not reporting, Sally enjoys running. She won a silver medal at the Australian Masters Athletics Championships in 2007. Sally is from Port Broughton on South Australia's Yorke Peninsula and at the age of eight, was the first girl to play for the Port Broughton Football Club.

United Nations Development Fund for Women



School of Population Health (SoPH)

Call for Abstracts

for

The 4th International Asian Health and Wellbeing Conference

July 2010

"A Holistic Approach to Asian Health"

Authors intending to deliver a presentation at the Fourth International Asian Health and Wellbeing Conference must submit an abstract of 200-300 words.

- You may present your work in one of the following formats:
 - **Oral presentation** (20 minutes for presentation and 5 minutes for Q&A)
 - or
 - **Poster:** An innovative way to highlight your findings or theoretical material and it should be at least or bigger than A0 size.
- Please submit your abstract(s) according to these headings only:
 - Background & Objective
 - Methods
 - Findings or Body of Discussion
 - Conclusion
- The 'Abstract Submission Form' must be fully completed and returned with your abstract.
- Where a paper is written by joint authors, at least one author must register to attend the conference.

All abstracts and full papers submitted for the conference will be peer-reviewed.

Deadline for Papers

Closing date for receipt of abstract	26 th Feb 2010
Notification of acceptance of abstract	22 nd Mar 2010
Deadline for submission of full papers for review	19 th Apr 2010
Notifications of reviewers comments	10 th May 2010
Final submission of full paper	7 th June 2010
Conference	5 th & 6 th July 2010

If you have any enquiry, kindly contact Mr Sun Kim (sw.kim@auckland.ac.nz) or visit the conference website <http://www.fmhs.auckland.ac.nz/asianhealthconference>.

Events



PHC RED Tri State Program
CONFERENCE
15-17 September 2010
Warrnambool, Victoria



Theme "Research to Practice – how to make it happen"

Early Notice

Following last year's most successful meeting in Alice Springs this year's PHC RED Tri State Conference will be held in the Greater Green Triangle.

The University Department of Rural Health will host the conference in Warrnambool. As the Tri State program passes its 5th year of operation, this is a time to look back and consolidate the achievements and move forward with new initiatives.

Sponsorship to attend

Each PHC RED Program will be funded to send 4 delegates. Accommodation, Conference meals & Travel Costs will be funded by the Tri State Program.

** You will need to book your own travel*

Conference Venue The Lady Bay Resort, Warrnambool
<http://www.ladybayapartments.com.au/>

Contact Liz Jackway at phred@greaterhealth.org for a registration form

SACHRU

South Australian Community Health Research Unit

The South Australian Community Health Research Unit is delighted to host a seminar by Professor Louise Potvin, a leading figure in the evaluation of health promotion.

A Realist Approach to Evaluating Health Promotion Interventions

DATE: Thursday 22nd and Friday 23rd April 2010

TIME: Thursday 9.30am – 5pm, Friday 9.00am to 4pm

VENUE: Flinders in the City - 182 Victoria Square (the old Reserve Bank Building)
Enter from Flinders Street or Victoria Square



Professor Louise Potvin

A professor in the department of social and preventive medicine at the Université de Montréal, Louise Potvin holds a PhD in community health and has done extensive work on evaluating community health programs. As a Canadian Health Services Research Foundation chair, Dr. Potvin is leading a program of education and research into how people's health is shaped by social circumstances and how public health programs can affect the health of socially disadvantaged people. Her chair program is called *Community Approaches to Inequalities in Healthcare*.

The main objective of the chair is to train new researchers and facilitate exchanges and collaboration between different partners in the area of community health, with a view to developing new strategies for reducing health inequalities and maximizing health benefits for marginalized populations. She was a member of the WHO Working Group on the evaluation of health promotion. She is a Fellow of the Canadian Academy of Health Sciences.

The Workshop

Health Promotion workers in Australia, and internationally, are being asked to demonstrate their effectiveness, a task complicated by debates regarding the nature of evidence required and the methods required to produce such evidence. In particular, health promotion practice based on collective strategies offers particular theoretical and methodological challenges for evaluators.

SOUTHGATE INSTITUTE FOR HEALTH, SOCIETY AND EQUITY

A national centre for research into the social determinants of health & wellbeing



Southgate Seminar on Resilience

23rd March 2010, 12.30-1.45pm

Room 1.09, Lecture Theatre, Health Sciences Building, Flinders University

Chair: Professor Fran Baum

ARC Federation Fellow, Director Southgate Institute for Health, Society and Equity
and South Australian Community Health Research Unit (SACHRU)

*This seminar presents an opportunity to discuss
two approaches to resilience.*

RSVPs to southgate.admin@flinders.edu.au by 19th of March 2010.

1. Smoking, Depression and Resilience: Quitting and the Process of Biographical Reinvention

Professor Paul Ward, Head, Discipline of Public Health

Introduction

In a study on Smoking and Resilience (funded by SA Health, 2007-9), people with clinically-diagnosed depression were interviewed in order to ascertain their patterns of smoking and nature/level of resilience (i.e. were 'quitters' more resilient than 'smokers'? what was the nature of the resilience?).

Methods

31 oral history interviews were conducted with people with depression, including 11 current, 10 ex- and 10 'never' smokers. The interviews focused on, among other things, people's smoking 'career', smoking environments surrounding them, and how they dealt with adverse circumstances. The interview data were analysed using NVIVO software.

Data Analysis

Data are analysed and interpreted with concepts of resilience, biographical disruption and biographical reinvention. The concept of resilience we worked on and developed was a psycho-social interactive model of resilience, which includes both psychological traits and socio-environmental resources which interact over the lifecourse in order to build, sustain and recover resilience. Biographical disruption was developed within the context of chronic illness to reflect the major life changes in response to the onset of chronic illness, or in this case, stopping smoking. This concept enables analysis of the events (or critical incidents) and processes leading to people re-constructing their identities and lives after stopping smoking. Biographical reinvention helps us to explore the shift in identities as a result of the biographical disruption. For example, what did people do, what did they leave behind, what did they take on?

A preliminary notice for:

The 2nd Annual

GP Super Clinics Conference

Creating a comprehensive primary healthcare system

9th & 10th June 2010 * Hilton on The Park, Melbourne*

As the Australian population grows and ages, severe strain will result on the current model of primary health care provision. This will further undermine an already struggling system. The bulk of the disease burden in Australia is accounted by chronic conditions like cancer, diabetes, and dementia as well as many preventable life style diseases.

Particular emphasis is on the concept of preventative care, as well as negotiating the long term economic viability of early intervention, such as patient education in self management as opposed to short term fixes such as increasing beds and emergency rooms. This includes extending the role of nurses and allied health professionals and shifting the traditional primary health paradigms in favour of more flexibility in clinical service provision.

Scepticism exists over whether the costly plan can effectively take hold considering the challenges of a scarce workforce and issues regarding funding and a clash with existing community health services. Under this view, the GP Super clinics may undermine the existing frame work of services potentially compromising patient safety and quality of care. The specifics of how these clinics will operate, be funded and run are still somewhat ambiguous. Similar plans have been put through effectively in various countries around the world including the UK, Canada and Singapore.

The GP Super Clinic issue is set to become a major factor in the upcoming federal election.

Informa's *GP Super Clinics conference* is the only event of its kind to concisely cover evolving trends in primary health care provision while at the same time providing a through and focused analysis of the GP Super Clinic concept. It will provide delegates with case studies, specialized reports and will cover the topic from a variety of angles and disciplines. Topics include:

- Planning ahead for a growing and ageing population
- Understanding the need for super clinics
- The current challenges faced in primary health care
- The super clinic model and its potential as a solution
- Funding and finance of GP super clinics
- Maintaining and attracting the workforce
- Easing emergency room overload
- The importance of community acceptance
- Economic impact of public health
- Improving population health
- Rural health deficiencies
- Collaboration of multidisciplinary health providers
- Information technology in clinical service delivery

Speakers will include government representatives, as well as independent search bodies and existing super clinic case studies. Featuring:

- Glenn Rowbotham, **Ballan GP Super Clinic**
- Jeremy Sammut, **Centre for Independent Studies**
- Dr. Francois Pretorius, **Lister House multidisciplinary Clinic**
- Mark Harris, **Centre for Primary Health Care and Equity**

For more information about the program and speaking opportunities please contact the Conference Manager, Yasamin Alttahir, at yasamin.alttahir@informa.com.au or call (+61 2) 9080 4325. The final brochure and speaker line-up will be available shortly. In the meantime, book early and take advantage of the early bird rate.

Register by the 30th of March and save \$200.00

Also a special offer for health care professionals! See overleaf for details

Level 2, 120 Sussex St,
Sydney, NSW 2000
PO Box 2728, Sydney
NSW 2001, Australia

PHONE (+61 2) 9080 - 4307
FAX (+61 2) 9290 - 3844
E-MAIL enquiries@informa.com.au
WEBSITE www.informs.com.au

informa

All previous newsletters can be found on our website at:

<http://www.greaterhealth.org/phcred/eNews2009/>

Of Interest . . .

12th ANNUAL HEALTH CONGRESS:

Exclusive Interview with...

Professor Warwick Anderson, CEO, National Health and Medical Research Council

We had the opportunity to talk to Professor Warwick Anderson AM, CEO, National Health and Medical Research Council, about the main issues in Australian healthcare today.

He discusses the future health challenges of an ageing population, health inequalities in indigenous populations and the research activities of the NHMRC to deal with these complex issues.

Click here to watch the interview - <http://informa.msgfocus.com/c/11G6V4481mnb463IKw>

Articles

Australian Obesity: A Tough Problem Calls for Tough Solutions -

<http://informa.msgfocus.com/c/11G6YjUptMSbhu292Q>

Extending the Role of Pharmacists - <http://informa.msgfocus.com/c/11G6YJ9apAGyyEMrPD>

Now is the time for all good people to come to the aid of Medicare -

<http://informa.msgfocus.com/c/11G6ZxBQhcjj70h3pd>

VESKI is delighted to have joined forces with Monash University to deliver the following forum...

Women in Research - Achieving it all

This is a great opportunity for researchers of all ages and we hope that you will be able to attend.

Professor Blackburn AC and an expert panel facilitated by Ms Anna Burke MP, Deputy Speaker of the House of Representatives & Federal Member for Chisholm will discuss major issues and topics relating to women in research. The expert panel includes Professor Margaret Sheil, CEO, Australian Research Council, Dr Megan Clark, CEO, CSIRO and Professor Sharon Bell, Author, FASTS Women in Science in Australia Report. Please go to for further information <http://www.veski.org.au/NewsView.aspx?id=165> on the guest speakers.

How to contact PHCRED

Primary Health Care Research Evaluation and Development (PHCRED) Program

Greater Health

Greater Green Triangle University Department of Rural Health

Flinders and Deakin Universities

PO Box 423

Warrnambool VIC 3280

email: phcred@greaterhealth.org

Phone Warrnambool: 03 5563 3526 or 03 5563 3315

Fax: 03 5563 3144

Liz Jackway

Administration Assistant (PHC RED)

03 5563 3526

Dr Michael Coates

Senior Research Fellow (Acting PHC RED Coordinator)

03 5563 3502

Dr Mark Morgan

Senior Research Fellow

08 8726 3911



GREATER HEALTH

GREATER GREEN TRIANGLE

University Dept. of Rural Health



All previous newsletters can be found on our website at:

<http://www.greaterhealth.org/phcred/eNews2009/>